



# DTBJ26RT

Magni telescopic boom lifts are engineered to work in multiple applications that require higher capacities. The new low centre of gravity design is engineered to have incomparable lifting performance and to respond to a growing market trend for maximum combination of height and outreach. It guarantees also better maintenance of the engine compartment and other components.

## STANDARD EQUIPMENTS:

- Stage V engine
- Telescopic jib
- Front oscillating axles to match the terrain irregularities granting optimal adherence to the ground
- Differential Locking
- Power to platform
- Safe to use in winds up to 12,5 m/s
- Integrated diagnostics screen with CAN BUS technology
- High probability to parts in common with other models of the range
- 360° rotation
- Four-wheel drive
- 4 Wheels Steering
- CAN BUS
- Large opening facilitates maintenance
- Horn
- Hour counter
- Proportional controls
- Flashing light
- Foam-filled tyres
- Electric safety pump
- Emergency stop button
- Movement alarm sensors
- Emergency lowering system
- On-board diagnostics system
- Drivable at full height
- Hydraulic Platform Rotation

## MAIN APPLICATIONS



Construction



Large events



Aircraft maintenance  
Ship repair



Plant Service



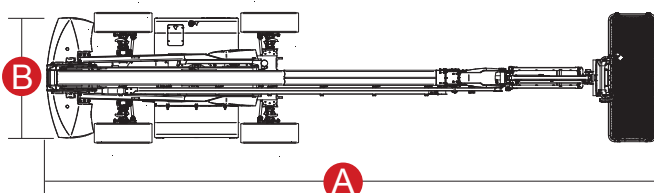
Oil & gas



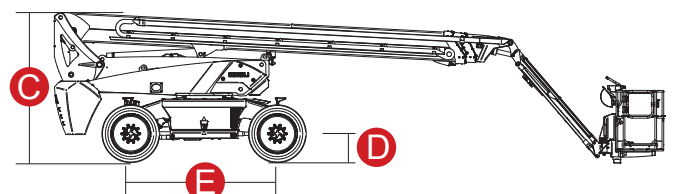
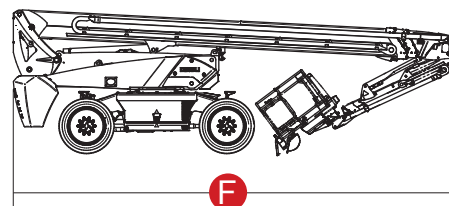
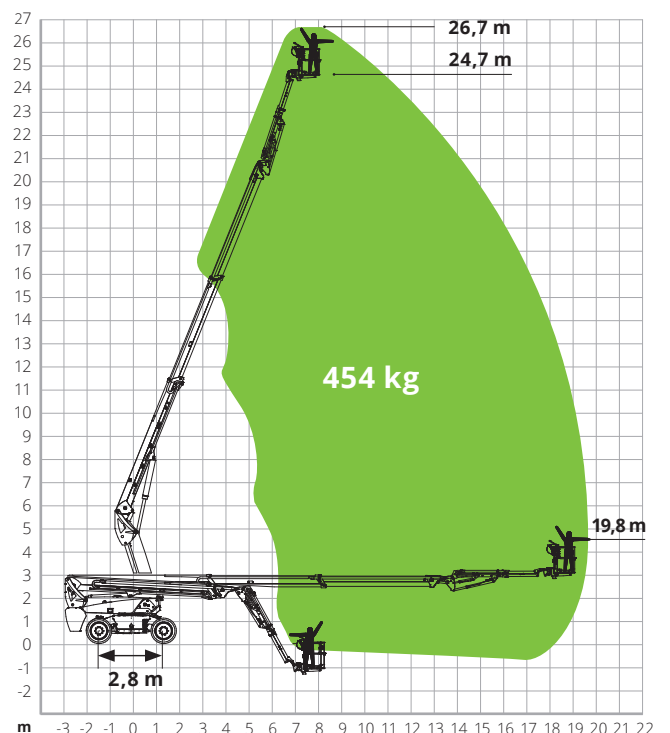
Restoration

### DTBJ26RT

Max. working height	26.70 m
Max. basket height	24.70 m
Max. reach	19.80 m
Max. platform load capacity	454 kg
Max. gradeability (stowed)	45%
Max. working slope	X -5° / Y -5°
Max. wind speed	12.5 m/s
<b>A</b> Platform length	10.83 m
<b>B</b> Platform width (tyres)	2.50 m
<b>C</b> Platform height	2.89 m
Platform length (stowed) ( <b>F</b> )	8.51 m
<b>E</b> Wheelbase	2.80 m
Tailswing	1.61 m
<b>D</b> Ground clearance	0.43 m
Turning radius (outside)	3.74 m
Turning radius (inside)	0.98 m
Turret rotation (continuous)	360°
Boom vertical rotation	71° (+68°/-3°)
Jib type	Telescopic
Jib length	3.00/4.30 m
Jib vertical rotation	130° (-60°/+70°)
Basket width	0.90 m
Basket length	2.44 m
Basket rotation	180° (+/-90°)
Total weight	16,600 kg
Travel speed (closed config.)	6 km/h
Travel speed (working config.)	1,1 km/h
Tyres (foam filled)	385/45-28
Engine	Deutz TD2.9 L4 55.4 kW
Diesel tank capacity	135 l
Hydraulic tank capacity	165 l
Electrical system	12 V DC
Transmission	Hydrostatic



Ergonomic ground control panel



**STANDARDS COMPLIANCE:** EN 280, ANSI/SAIA A92.20